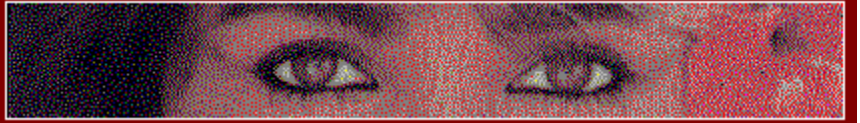


SELECT EXIT FROM THE FILE MENU TO QUIT



PLEASE READ THIS ENTIRE DOCUMENT BEFORE PROCEEDING

## GIF CONSTRUCTION SET

# GIF CONSTRUCTION SET 95 AND NT

If you'd like to see this file again in the future, click on the What's New icon.  
Complete documentation for GIF Construction Set can be found by double clicking on the  
Documentation icon.

---

### GIF Construction Set for Windows 1.0N

*GIF Construction Set for Windows* is a powerful collection of tools to work with multiple-block GIF files. It will allow you to assemble GIF files containing image blocks, plain text blocks, comment blocks and control blocks. It includes facilities to manage palettes and merge multiple GIF files together. It will make the extensions of the GIF specification work for you. Among its other functions, *GIF Construction Set for Windows* can:

- Convert AVI video streams to animated GIF files.
- Create Netscape looped animations.
- Create interlaced GIF files.
- Create transparent GIF files.
- Add, edit and delete comment blocks.
- Add non-destructive text to images as plain text blocks.
- Create multiple-image GIF files.
- Serve as a fully-compliant Windows GIF viewer application.
- Be a GIF viewer "helper" application for a World Wide Web browser or Mosaic client.

### New features in this release include:

- **Wide palette GIF files to support more than 256 colours. (Can this be true?)**
- **AVI to GIF conversion.**
- **Animation Wizard – create animated GIF files instantly.**
- **Animation sanity checking – never again create animations Netscape doesn't like.**
- **Banners – generate eye-catching animated text effects.**
- **Transitions – add life to formerly still graphics.**
- **Manage multiple control blocks at once.**
- **Extract images from complex GIF files.**
- **More palette options.**
- **Automatic header field correction.**
- **Previous file list in the File menu.**

- **Adjustable window.**
- **More new stuff...**

*GIF Construction Set for Windows* requires a minimum of four megabytes of memory to run reliably, with eight megabytes preferable. Larger images may require more memory still.

*GIF Construction Set for Windows* is available in a sixteen-bit build for Windows 3.1 and 3.11 and a 32-bit build for Windows 95 and NT. The two packages have identical functionality, except that the 32-bit version supports long file names. Registered users of GIF Construction Set can use either build.

**Note to Windows 95 users – we've encountered occasional reports of the 32-bit build of GIF Construction Set having difficulty inserting images under Windows 95. Known good image files are reported as corrupted. This appears to be an interaction between GIF Construction Set and another application. As of this writing, we think we've isolated this and stomped it. If you encounter it, we recommend that you either reboot your system and don't run any other applications before running GIF Construction Set or use the sixteen-bit build of this software. Please let us know what applications you were running or had run previously in your current Windows session when the problem occurred.**

If you like GIF Construction Set for Windows, be sure to check out Graphic Workshop, QuickShow Light, GrafCat for Windows, GraphSaver, Pagan Daybook and the other Alchemy Mindworks shareware applications. See the end of the GIF Construction Set for Windows documentation file for more information.

Check out our web page at <http://www.mindworkshop.com> for the latest releases of all our applications.